



product name

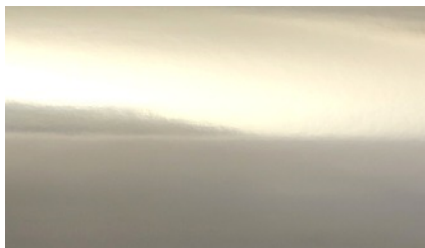
# CHROME PAINT - VERNICE CROMATA

description

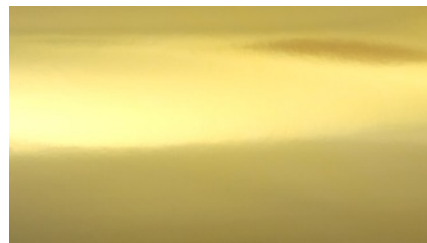
## CHROME PAINT EFFECT



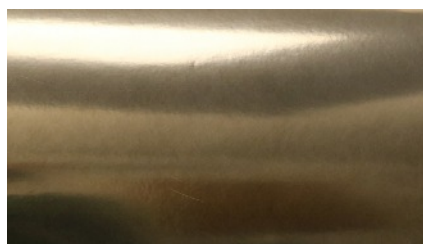
esperienze metalliche



CS.01 CHROME



CG.02 GOLD



CK.04 BLACK CHROME

product name

# CHROME PAINT - VERNICE CROMATA

description

CHROME PAINT EFFECT

applicazione



Product	Coverage	Hardener	Thinner	Colour
SV282AF02 Gloss Enamel	5 mq/kg	100% SIN35	10-20% DP039-B	Black Gloss
CRONO CHROME	3 mq/L	---	---	Aluminium
SV026AG01 Solution	3 mq/L	---	Thinner not required. Add thinner BA100 at 10% as needed	catalogue colour: CS.01 CHROME CG.02 GOLD CK.04 BLACK CHROME
SV210AF03 Transparent	5 mq/kg	25% SIN35	20% BA100 20-30% AMA50BA	Transparent

## characteristics

about	Solvent-based one component paint
application uses	Home accessories, Furniture, Sports equipment, and more
main properties	Metallic chrome effect paint
application method	The product is applied by a spraygun



### PAINTING CYCLE

Gloss Black Enamel SV282AF02 + CRONO + SV026AG01 (neutral or coloured) + Transparent SV210AF03

## suggested base coat and primer

metal	<ul style="list-style-type: none"> <li>- Degrease and clean the surface before starting the cycle</li> <li>- For Aluminium, Brass, Zinc alloy and other alloys, prepare the surface with SV366AF02 anti-corrosion epoxy primer before starting the cycle</li> <li>- If surface corrosion is not an issue on metal, apply the SV282AF02 black gloss enamel paint to the surface</li> <li>- It is advisable to do an adhesion test before starting series production</li> </ul>
plastic	<ul style="list-style-type: none"> <li>- Degrease and clean the surface before starting the painting cycle</li> <li>- With ABS, the SV282AF02 glossy black enamel paint can be directly applied</li> <li>- On other plastics, apply ALLGRIP primer before starting the cycle</li> <li>- It is advisable to do an adhesion test before starting series production</li> </ul>
wood	sand smooth and clean the surface, then apply the SV282AF02 gloss enamel paint

## application cycle

### **APPLICATION CYCLE with AIR DRYING or OVEN DRYING – read notes on page 4**

- 1) prepare the surface material
- 2) apply one or more layers of **high gloss enamel SV282AF02** colour BLACK (or provided colour)
  - add hardener SIN35 at 100%
  - add thinner DP039-B at 10-20%
  - let air dry 24-36 hours at 25°C **or** oven dry for 40-60 minutes at 60-80°C
  - this layer **must be completely dry** and cool before applying CRONO
- 3) after dry, apply **CRONO** (chrome colour)
  - apply several even light layers until you see a bright chrome surface
  - **we suggest to reduce the paint volume from the spraygun and spray more light layers to build up the chrome base colour**
  - let air dry 1-4 hours at 25°C **or** oven dry 10-15 minutes at 60-80°C and let surface cool
- 4) after dry, apply **SV026AG01**
  - always apply SV026AG01 after applying CRONO
  - the SV026AG01 is clear or it is tinted to make other colours like Gold or Black Chrome
  - to achieve the colour saturation you want, **use the same reduced paint volume from the spraygun and spray multiple light coats one after another...**no waiting needed
  - let air dry for 2-4 hours at 25°C **or** oven dry 10-15 minutes at 60-80°C and let surface cool
- 5) after dry, apply the **SV210AF03 TRANSPARENT** ...no waiting needed
  - add hardener SIN35 at 25%
  - thinner BA100 at 20-30%
  - additive AMA50BA at 20-30%
  - apply several light layers, no waiting needed, to build up the topcoat
  - let air dry 24 hours at 25°C **or** oven dry for 40-50 minutes a 60-80°C
- 6) When completely dry, about 24 hours, you can polish the finished surface for more shine



## application information

- Avoid applying and drying in cold environments
- Avoid excessive thickness, apply **several LIGHT layers** with constant thickness
- Applying using a low pressure sprayer for the paints, high pressure is not suggested.
- Apply the gloss black enamel SV282AF02 in one or two layers to have a high gloss and uniform surface. Wait for the evaporation between layers...let this paint dry completely
- We can change the colour of the high gloss enamel to get other shades of the chrome effect. Contact the laboratory for more information.
- Do not apply the CRONO if the black enamel SV282AF02 is not completely dry
- Apply CRONO with multiple light coats, **reduce the paint volume from the spraygun and spray multiple light layers until you obtain a bright chrome base colour.**
- Apply SV026AG01 with multiple light coats, use the same **reduced paint volume from the spraygun and spray multiple light coats one after another**...no waiting needed

If you are using a coloured SV026AG01, **repeat spraying multiple light layers until you obtain the colour desired.**

- Apply several light coats of SV210AF03 Transparent...spray the first layer, wait for evaporation of paint thinner, then spray more layers with no waiting between layers
- It is possible to dilute the SV026AG01 with BA100 thinner at 10% by weight. This is recommended for applications on large and complicated surfaces.
- It is possible to dilute the CRONO with BA100 thinner at 5% by weight. This is recommended for applications on large and complicated surfaces.

## suggested application times

base coat and transparent	If necessary, apply ALLGRIP before applying the high gloss enamel let air dry for 2-6 hours at 25° C <b>or</b> oven dry for 30-40 minutes at 60-80° C
SV026AG01 solution	Always apply the SV026AG01 solution after applying CRONO The SV026AG01 solution may be clear or tinted with a RAL code Wait the time necessary before applying SV210AF03 Transparent

## drying times

dust free	10 minutes at 25°C
dry to touch	20 minutes at 25°C
oven drying	see directions



## technical details

nozzle size	1,5 - 1,8 mm
pot life	3 hours at about 25°C
application pressure	2,5 atm
coverage area	About 3 m <sup>2</sup> /kg
outdoor use	The product is not suitable for outdoor
shelf life	The product must be stored at temperatures between 5 and 30°C The product is stable for 12 months after the shipping date The product may have sediments in the bottom of the can and this is natural, it is important to mix the paint well before using

Revisione scheda V1.19

*I dati e le informazioni contenute nella presente scheda tecnica, sono frutto della nostra esperienza e di accurate prove e test di laboratorio. Essendo tuttavia la verniciatura, un processo che include un insieme di operazioni al di fuori delle nostre possibilità di controllo, l'applicazione e le prestazioni dei prodotti, ricadono sotto l'esclusiva responsabilità dell'utilizzatore.*

CROMAS SRL  
Via Milano, 21 20020 Lainate (MI) - ITALY  
Tel 0331 877427 Fax 0331 876829  
www.cromas.it info@cromas.it