

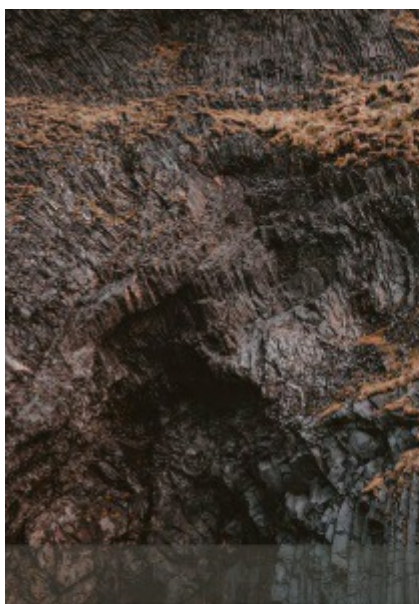


product name

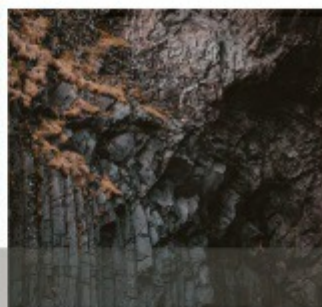
XR.01 RUGGINE- RUST

description

NATURALLY OXIDIZED RUST EFFECT

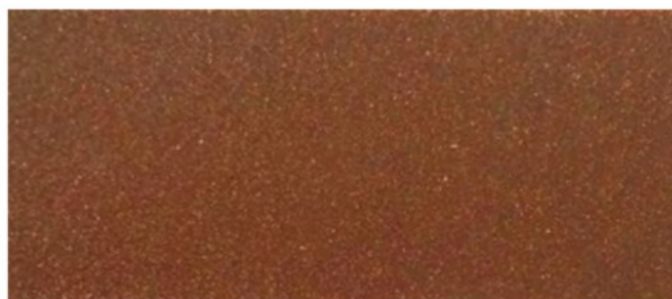


CROMAS



PAINTS INSPIRING CREATIVITY

i s t i n t i m a t e r i c i



XR.01 RUGGINE - RUST

product name

XR.01 RUGGINE- RUST

description

NATURALLY OXIDIZED RUST EFFECT

applicazione



Product	Coverage	Hardener	Thinner	Colour
XR.01 RUGGINE	4 m ² /kg	10% SIN40	10-20% DP039-B	Dark Grey
REATTIVO N100	3-4 m ² /L	---	—	—
PROTETTIVO P-RX	6 m ² /L	10% SIN40	—	Transparent

about	acrylic-polyurethane bi-component solvent-based paint
characteristics	many objects, furniture, and more to obtain the natural rust effect
application method	the product is applied by a spraygun or air-assisted pump



PAINTING CYCLE

**PRIMER + RUGGINE + Light Sanding + REATTIVO N100 +
PROTETTIVO P-RX + TRANSPARENT**

primers recommended...see table for options

metal	outdoor - SV366AF02 colour WHITE indoor - ALLGRIP colour WHITE
plastic	ALLGRIP colour WHITE...except PP and PE plastics
wood	pre-prime and sand with your primer, then apply ALLGRIP WHITE
other surfaces	see the table on the last page for primer options



application cycle

Prepare the surface and apply the correct primer for the surface material and let dry

1) Application of **XR.01 RUGGINE BASE PAINT**, stir well, let dry overnight

- add SIN40 at 10% by weight
- add DP039-B at 10-20% by weight

2) The next day, **lightly sand** with 400 to 600 grit sandpaper without breaking down the surface

3) Apply large amounts of the **REATTIVO N100** by spraying or squirting the oxidization solution and let it dry at room temperature. Do not use a fan to dry the surface. This process can be repeated several times to get the desired look for the oxidization...read the information below.

4) To make the rust effect look uniform, **rinse lightly with water**, or even better, rinse with demineralised water and let dry.

5) Apply **PROTETTIVO P-RX**.

- add SIN40 at 10% by weight.
- Spray in two light coats separated by a very light scuffing of the surface. This is the solution to stop the oxidization process. The application must be wet and uniform. Depending on the conditions, this paint will dry in about 2-6 hours.

6) Apply a **glossy or matt transparent** finish to protect the surface. An acrylic topcoat with a higher dry resin mix is suggested. See the last page for transparent topcoat options

application information

This is a creative process and you can control the amount of natural patina or oxidized effect on the surface. After you spray the base colour, you use a squirt bottle to apply the Reattivo N100. If you use a lot of N100 and do it two times, you will get a nice oxidized rust effect. Also, if you use the N100 on the surface that is vertical, the liquid will run down and make natural looking streaks. If you put the surface flat or horizontal, the N100 will make more circles or patterns of rust.

For surfaces that have to be handled regularly, it is recommended to apply at least 2 coats of transparent paint.



other information

mixing	the product materials will settle on the bottom of the can. stir the can well before application
preparation of the surface	<p>for a wood surface, first apply a sealer to the surface, then the Allgrip primer</p> <p>for a MDF wood surface, you can apply the Ruggine base directly on the surface</p> <p>for a metal surface that can become rusty, apply SV366AF02 anti-corrosive epoxy primer</p> <p>for a plastic surface, clean with solvents, apply Allgrip primer...except PP and PE plastics</p>
topcoat application	<p>It is not recommended to apply the transparent after the Reattivo N100, as this will cause a constant oxidation of surface and will result in a surface that will continue to rust. Use the PROTETTIVO P-RX first to prevent more oxidization of the surface.</p> <p>apply a glossy or matt transparent finish to protect the surface. An acrylic topcoat with a higher dry resin mix is suggested. If the surface will have a lot of use, apply two or more coats of the topcoat.</p> <p>See the last page for transparent topcoat options</p>

technical details

nozzle size	2,0 - 2,5 mm for Rust Base.....1,8 mm for other paints
coverage area	about 4 m2/kg depending on paint
shelf life	<p>the product must be stored at temperatures between 5 and 30°C</p> <p>the product is stable within 12 months since the shipping date</p> <p>the formation of sediments in the bottom of the can is natural and does not affect the product. Mix very well before using the paints.</p>

drying

evaporation	10-15 minutes at 25°C
drying	60 minutes at 25°C for the paints only

Other Suggested Primers

Product	Coverage	Hardener	Thinner	Colour
PRIMER SV366AF02 Epoxy Primer Anticorrosive	5 mq/kg	20% EP720	40-50% DN500	White
SV033AE01 Epoxy Vinyl Primer	5 mq/kg	15% EP720	40-50% DN500	White
PRIMER VMP Acrylic Primer	5-6 mq/L	10% SIN40	not required	Transparent
BASE DSA 80 Acrylic Primer	5-6 mq/kg	10% SIN40	40-60% DP039-B	Transparent
ALLGRIP Acrylic Primer	5 mq/kg	10% SIN40	40-50% DP039-B	White

Other Suggested Transparents

Product	Coverage	Hardener	Thinner	Colour
SV056AG02 Transparent acrylic for exterior use - high resistant topcoat with Teflon additives	6-8 mq/kg	30% SIN40	40% DP039-B	Transparent, gloss 10
TM069 Transparent acrylic for exterior use - topcoat with Teflon additives	6-8 mq/kg	30% SIN35	0-20% DP039-B	Transparent, gloss 10
SV142AD02 Transparent acrylic for exterior use	6-8 mq/kg	30% SIN40	40% DP039-B	Transparent, gloss 5
NANOMATT 05 Transparent acrylic for interior use	6-8 mq/kg	25% SIN63	40% DP039-B	Transparent, gloss 5
SV377AC05 Transparent acrylic for interior or exterior use	6-8 mq/kg	50% SIN40	40% DP039-B	Transparent, gloss 90

Revisione scheda V1.19

I dati e le informazioni contenute nella presente scheda tecnica, sono frutto della nostra esperienza e di accurate prove e test di laboratorio. Essendo tuttavia la verniciatura, un processo che include un insieme di operazioni al di fuori delle nostre possibilità di controllo, l'applicazione e le prestazioni dei prodotti, ricadono sotto l'esclusiva responsabilità dell'utilizzatore.

CROMAS SRL
Via Milano, 21 20020 Lainate (MI) - ITALY
Tel 0331 877427 Fax 0331 876829
www.cromas.it info@cromas.it