

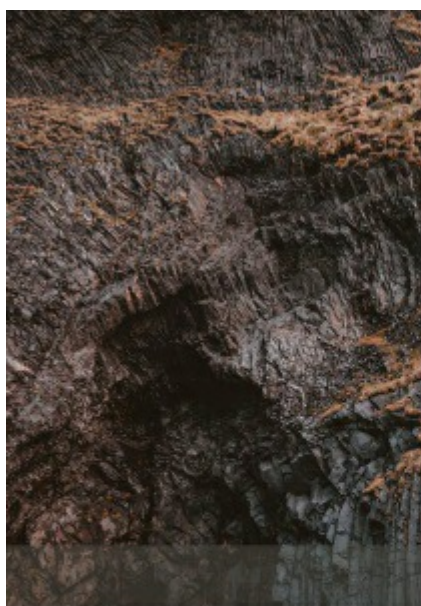


product name

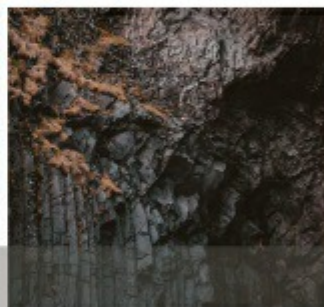
ANTIQUE BRONZE - XB.02 BRONZO ANTICO

description

NATURALLY OXIDIZED ANTIQUE BRONZE EFFECT PAINT

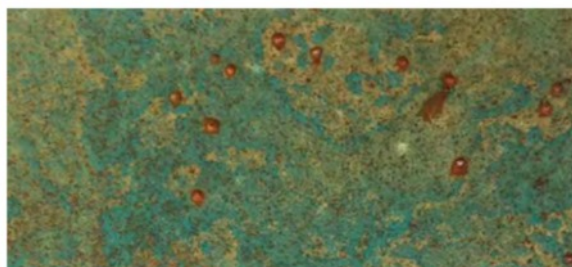


cromas



PAINTS INSPIRING CREATIVITY

i s t i n t i m a t e r i c i



XB.02 | BRONZO ANTICO – ANTIQUE BRONZE

Naturally oxidized metal effect paints in Rust and Antique Bronze

product name

ANTIQUE BRONZE - XB.02 BRONZO ANTICO

description

NATURALLY OXIDIZED ANTIQUE BRONZE EFFECT PAINT



Product	Coverage	Hardener	Thinner	Colour
XB.02 BRONZO ANTICO & PASTA OTTONE HB in 1:1 ratio	4 m ² /kg	10% SIN40	10-20% DP039-B	Metallic Grey
REATTIVO N100	3-4 m ² /L	---	—	—
PROTETTIVO P-RX	6 m ² /L	10% SIN40	—	Transparent

about	acrylic-polyurethane solvent-based bi-component paint
application uses	a variety of objects, furniture, artistic items to have an Antique Bronze effect
application method	the product is applied by a spraygun or air-assisted pump

mixing of effect paint

pigmentation	mix 50% PASTA OTTONE HB and 50% BRONZO ANTICO
hardening	SIN40 at 10% by weight
thinning	DP039-B at 15% by weight



PAINTING CYCLE
ANTIQUE BRONZE MIX + Light Sanding + REATTIVO N100 + PROTETTIVO P-RX + TRANSPARENT

primers recommended (see the table on last page for options)

metal	outdoor - SV366AF02 colour WHITE indoor - ALLGRIP colour WHITE
plastic	ALLGRIP colour WHITE...except PP and PE plastics
wood	pre-prime and sand with your primer, then apply ALLGRIP WHITE

application cycle

Prepare the surface and apply the correct primer for the surface material and let dry

- 1) Application of **ANTIQUÉ BRONZE BASE**, stir well, let dry overnight
 - mix 50% PASTA OTTONE HB and 50% BRONZO ANTICO at a 1:1 ratio
 - add SIN40 at 10% by weight
 - add DP039-B at 10-20% by weight
- 2) The next day, **lightly sand** with 400 to 600 grit sandpaper without breaking down the surface
- 3) Apply large amounts of the **REATTIVO N100** by spraying or squirting the oxidization solution and let it dry at room temperature. Do not use a fan to dry the surface. This process can be repeated several times to get the desired look for the oxidization....read the information below.
- 4) Apply **PROTETTIVO P-RX**.
 - add SIN40 at 10% by weight.
 - Spray if in two coats separated by a very light scuffing of the surface. This is the solution to stop the oxidization process. The application must be wet and uniform. Depending on the conditions, this paint will dry in about 2-6 hours.
- 5) Apply a **glossy or matt transparent** finish to protect the surface. An acrylic topcoat with a higher dry resin mix is suggested. See the last page for transparent topcoat options

application information

This is a creative process and you can control the amount of natural patina or oxidized effect on the surface. After you spray the base colour, you use a squirt bottle to apply the Reattivo N100. If you use a lot of N100 and do it two times, you will get more green patina and a nice oxidized effect. If you use less, it will show more of the base colour. Also, if you use the N100 on the surface that is vertical, the liquid will run down and make natural looking streaks. If you put the surface flat or horizontal, the N100 will make more circles of green patina.

For surfaces that have to be handled regularly, it is recommended to apply at least 2 coats of transparent paint.

technical details

nozzle size	1,8 - 2,2 mm for Bronze Base
coverage area	about 4-6 m ² /kg depending on paint
shelf life	the product must be stored at temperatures between 5 and 30°C the product is stable within 12 months since the shipping date the formation of sediments in the bottom of the can is natural and does not affect the product. Mix very well before using the paints.

Drying

evaporation	10-15 minutes at 25°C
drying	60 minutes at 25°C for the paints only



other information

mixing	the product materials will settle on the bottom of the can. stir the can well before application
preparation of the surface	<p>for a wood surface, first apply a sealer to the surface, then the Allgrip primer</p> <p>for a MDF wood surface, you can apply the Ruggine base directly on the surface</p> <p>for a metal surface that can become rusty, apply SV366AF02 anti-corrosive epoxy primer</p> <p>for a plastic surface, clean with solvents, apply Allgrip primer...except PP and PE plastics</p>
topcoat application	<p>It is not recommended to apply the transparent after the Reattivo N-100, as this will cause a constant oxidation of surface and will result in a surface that will continue to rust. Use the PROTETTIVO P-RX first to prevent more oxidization of the surface.</p> <p>apply a glossy or matt transparent finish to protect the surface. An acrylic topcoat with a higher dry resin mix is suggested. If the surface will have a lot of use, apply two or more coats of the topcoat.</p> <p>See the last page for transparent topcoat options</p>



Other Suggested Primers

Product	Coverage	Hardener	Thinner	Colour
PRIMER SV366AF02 Epoxy Primer Anticorrosive	5 m2/kg	20% EP720	40-50% DN500	White
SV033AE01 Epoxy Vinyl Primer	5 m2/kg	15% EP720	40-50% DN500	White
PRIMER VMP Acrylic Primer	5-6 m2/L	10% SIN40	not required	Transparent
BASE DSA 80 Acrylic Primer	5-6 m2/kg	10% SIN40	40-60% DP039-B	Transparent
ALLGRIP Acrylic Primer	5 m2/kg	10% SIN40	40-50% DP039-B	White

Other Suggested Transparents

Product	Coverage	Hardener	Thinner	Colour
SV056AG02 Transparent acrylic for exterior use - high resistant topcoat with Teflon additives	6-8 m2/kg	30% SIN40	40% DP039-B	Transparent, gloss 10
TM069 Transparent acrylic for exterior use - low thickness topcoat with Teflon additives	6-8 m2/kg	30% SIN35	0-20% DP039-B	Transparent, gloss 10
SV142AD02 Transparent acrylic for exterior use	6-8 m2/kg	30% SIN40	40% DP039-B	Transparent, gloss 5
NANOMATT 05 Transparent acrylic for interior use	6-8 m2/kg	25% SIN63	40% DP039-B	Transparent, gloss 5
SV377AC05 Transparent acrylic for interior or exterior use	6-8 m2/kg	50% SIN40	40% DP039-B	Transparent, gloss 90