



product name

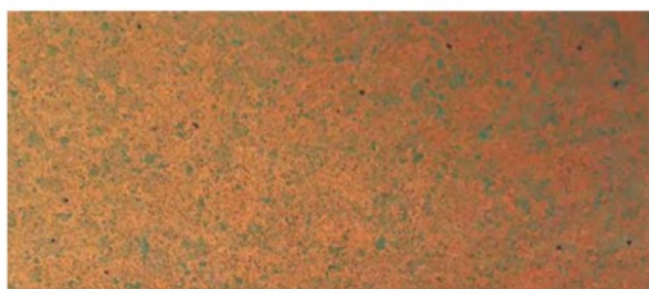
VERDIGRIS - XV.04 VERDERAME

description

NATURALLY OXIDIZED VERDIGRIS EFFECT PAINT



i s t i n t i m a t e r i c i



XV.04 | VERDERAME - VERDIGRIS

Naturally oxydized metal effect paints in Antique Brass and Verdigris

product name

VERDIGRIS - XV.04 VERDERAME

description

NATURALLY OXIDIZED VERDIGRIS EFFECT PAINT



Product	Coverage	Hardener	Thinner	Colour
BASE RESINA V5 & PASTA RAME HC in 1:1 ratio	4 m ² /kg	10% SIN40	10-20% DP039-B	Gold
REATTIVO N100	3-4 m ² /L	---	—	—
PROTETTIVO P-RX	6 m ² /L	10% SIN40	—	Transparent

about	acrylic-polyurethane solvent-based bi-component paint
application area	a variety of objects, furniture, artistic items to have a Verdigris effect
application method	the product is applied by a spraygun or air-assisted pump

mixing of effect paint

pigmentation	mix 50% PASTA RAME HC and 50% BASE RESINA V5
hardening	SIN40 at 10% by weight
thinning	DP039-B at 10-20% by weight



PAINTING CYCLE

VERDIGRIS MIX + Light Sanding + REATTIVO N100 + PROTETTIVO P-RX + TRANSPARENT

primers recommended (see the table on last page for options)

metal	outdoor - SV366AF02 colour WHITE indoor - ALLGRIP colour WHITE
plastic	ALLGRIP colour WHITE...except PP and PE plastics
wood	pre-prime and sand with your primer, then apply ALLGRIP WHITE

application cycle

Prepare the surface and apply the correct primer for the surface material and let dry

- 1) Application of **VERDIGRIS MIX**, stir well, let dry overnight
 - mix 50% PASTA RAME HC and 50% BASE RESINA V5
 - add SIN40 at 10% by weight
 - add DP039-B at 10-20% by weight
- 2) The next day, **lightly sand** with 600 to 800 grit sandpaper without breaking down the surface
- 3) Apply large amounts of the **REATTIVO N100** by spraying or squirting the oxidization solution and let it dry at room temperature, do not use a fan to dry the surface. This process can be repeated several times to get the desired look for the oxidization...read the information below.
- 4) Apply **PROTETTIVO P-RX**.
 - add SIN40 at 10% by weight.

Spray if in two coats separated by a very light scuffing of the surface. This is the solution to stop the oxidization process. The application must be wet and uniform. Depending on the conditions, this paint will dry in about 2-6 hours.
- 5) Apply a **glossy or matt transparent** finish to protect the surface. An acrylic topcoat with a higher dry resin mix is suggested. See the last page for transparent topcoat options

application information

It is not recommended to apply the Transparent after the Reattivo N-100, as this will cause a constant oxidation of surface and will result in a leaching effect. Use the P-RX first.

This is a creative process and you can control the amount of natural patina or oxidized effect on the surface. After you spray the base colour, you use a squirt bottle to apply the Reattivo N100. If you use a lot of N100 and do it two times, you will get more green patina and a nice oxidized effect. If you use less, it will show more of the base colour. Do not use less N100 for the Rust paint, the surface will be black. Also, if you use the N100 on the surface that is vertical, the liquid will run down and make natural looking streaks. If you put the surface flat or horizontal, the N100 will make more circles of green patina.

For surfaces that have to be handled regularly, it is recommended to apply at least 2 coats of transparent paint.

technical details

nozzle size	2,0 - 2,5 mm for Verdigris Base.....1,8 mm for other paints
coverage area	about 4 m ² /kg depending on paint
shelf life	the product must be stored at temperatures between 5 and 30°C the product is stable within 12 months since the shipping date the formation of sediments in the bottom of the can is natural and does not affect the product. Mix very well before using the paints.



drying

evaporation	10-15 minutes at 25°C
drying	60 minutes at 25°C for the paints only

other information

mixing	the product materials will settle on the bottom of the can. stir the can well before application
preparation of the surface	<p>for a wood surface, first apply a sealer to the surface, then the Allgrip primer</p> <p>for a MDF wood surface, you can apply the Ruggine base directly on the surface</p> <p>for a metal surface that can become rusty, apply SV366AF02 anti-corrosive epoxy primer</p> <p>for a plastic surface, clean with solvents, apply Allgrip primer...except PP and PE plastics</p>
topcoat application	<p>It is not recommended to apply the transparent after the Reattivo N-100, as this will cause a constant oxidation of surface and will result in a surface that will continue to rust. Use the P-RX first to prevent more oxidization of the surface.</p> <p>Apply a glossy or matt transparent finish to protect the surface. An acrylic topcoat with a higher dry resin mix is suggested. If the surface will have a lot of use, apply two or more coats of the topcoat.</p> <p>See the last page for transparent topcoat options</p>

Other Suggested Primers

Product	Coverage	Hardener	Thinner	Colour
PRIMER SV366AF02 Epoxy Primer Anticorrosive	5 m2/kg	20% EP720	40-50% DN500	White
SV033AE01 Epoxy Vinyl Primer	5 m2/kg	15% EP720	40-50% DN500	White
PRIMER VMP Acrylic Primer	5-6 m2/L	10% SIN40	not required	Transparent
BASE DSA 80 Acrylic Primer	5-6 m2/kg	10% SIN40	40-60% DP039-B	Transparent
ALLGRIP Acrylic Primer	5 m2/kg	10% SIN40	40-50% DP039-B	White

Other Suggested Transparents

Product	Coverage	Hardener	Thinner	Colour
SV056AG02 Transparent acrylic for exterior use - high resistant topcoat with Teflon additives	6-8 m2/kg	30% SIN40	40% DP039-B	Transparent, gloss 10
TM069 Transparent acrylic for exterior use - a low thickness topcoat with Teflon additives	6-8 m2/kg	30% SIN35	0-20% DP039-B	Transparent, gloss 10
SV142AD02 Transparent acrylic for exterior use	6-8 m2/kg	30% SIN40	40% DP039-B	Transparent, gloss 5
NANOMATT 05 Transparent acrylic for interior use	6-8 m2/kg	25% SIN63	40% DP039-B	Transparent, gloss 5
SV377AC05 Transparent acrylic for interior or exterior use	6-8 m2/kg	50% SIN40	40% DP039-B	Transparent, gloss 90

Revisione scheda V1.19

I dati e le informazioni contenute nella presente scheda tecnica, sono frutto della nostra esperienza e di accurate prove e test di laboratorio. Essendo tuttavia la verniciatura, un processo che include un insieme di operazioni al di fuori delle nostre possibilità di controllo, l'applicazione e le prestazioni dei prodotti, ricadono sotto l'esclusiva responsabilità dell'utilizzatore.

CROMAS SRL
Via Milano, 21 20020 Lainate (MI) - ITALY
Tel 0331 877427 Fax 0331 876829
www.cromas.it info@cromas.it